

**ACROSS Te Kotahitanga o Te Wairua**

**ANNUAL REPORT**

**2007-08**



### **Mission**

to express the caring heritage of the Anglican and Catholic churches, through a charitable trust working in the community to provide professional social services to individuals and families in need.

### **Values**

- to be open to change and respond effectively to social need.
- ensure our work is consistent with the caring traditions of the Church.
- positive regard for people.
- commitment to helping people improve their lives.
- recognition that people have different needs and values and that our role is to help people determine their own needs.

## **CONTENTS**

<b>Foreword - Tom Brown of Wellington P J Cullinane Bishop of Palmerston North</b>	<b>2</b>
<b>Chairpersons Report – Roger Clark</b>	<b>3</b>
<b>Directors Report – Graeme Munford</b>	<b>4</b>
<b>Services and programmes</b>	<b>5</b>
<b>Financial Report</b>	<b>6</b>
<b>Acknowledgments</b>	<b>7</b>

## Foreword

---

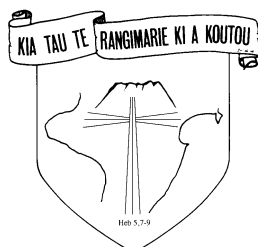


**+ Tom Brown**  
**Bishop of the Diocese of Wellington**

The Diocese of Wellington is celebrating its Sesquicentennial - 150<sup>th</sup> anniversary - this year. It has been an opportunity to give thanks for the saintly servant leadership of Anglicans from Wellington to Ruapehu including the many people and agencies who have worked under the banner of social services.

It is also 10 years since many of us marched on the Hikoī of Hope to demonstrate our concern for health, education and affordable housing. Its 10<sup>th</sup> anniversary is a time for us to reflect on those same issues in today's context and the hardship many people face and we can acknowledge the pivotal support such agencies as ACROSS make available.

ACROSS lives out that social mark of mission in "responding to human need by loving service" as it works alongside both church and non church agencies in the community providing a range of services that enable people to help themselves and in doing so reinforces the New Zealand Council for Christian Social Service message: *Aroha tētahi ki tētahi* - Let Us Look After Each Other.



**P J Cullinane**  
**Bishop of Palmerston North**

As I reflect on the beginnings of ACROSS, the steady growth of this agency and the many good works undertaken, I rejoice in the dedicated staff, volunteers and those who contribute in different ways.

The challenges are always there. As the community of Jesus' disciples, may we continue to respond to social needs in the community.

## **CHAIRPERSONS REPORT**

---

It is with pleasure that I present the eighteenth Annual Report of ACROSS Te Kotahitanga O Te Wairua.

I joined the board of Across in October 2005, and last year was elected by the board to become Chairman. I would like to thank the previous chairperson Doreen Creamer for her knowledge and stewardship during challenging times from 2001 until her retirement in October 2007. I would also like to thank Lesley Read who stood down this year for her contribution over the years as director and later as a board member. This year we have welcomed Rachel Lohrey to the board.

### **The Year in Review**

The previous year has been one of positive change and achievement for ACROSS. Our director Graeme Munford has again actively pursued opportunities to broaden the funding base providing core services as well as offering new services and responding to needs. Graeme has actively pursued opportunities to broaden services in collaboration with other agencies. I would like to thank him for his hard work and professionalism in a trying year.

The finance committee led by Wayne Cameron has continued and maintained a strong foundation of financial stability and stewardship to enable ACROSS to continue to fulfil its mission statement. During the year Brenda Papesch retired from the finance committee after many years of loyal service and hard work. The policy committee, ably assisted by Kevin Frost has continued to review and construct new policies.

ACROSS is looking forward to greater certainty around future funding from the government's new initiative Pathways to Partnership policy. The plan is that NGO's providing essential social services will be fully funded by the year 2012.

The board is currently in discussions with Manchester House, a Feilding community based Christian social service organisation to explore ways of working together and gain increased effectiveness and building a framework where we can continue to provide excellent services to our communities.

### **Looking Ahead**

The current government plan of supporting strong NGO's to fully fund the delivery of essential services over the next four years is a challenge for ACROSS to continue to improve the professional delivery of these essential services, to innovate, grow, and be adaptable and at the same time focus on measurable result based outcomes.

I would like to thank my fellow board members and staff for their work and commitment and passion, by continuing to ensure that ACROSS fulfil its mission statement and vision based on Christian values.

It is fitting to once again acknowledge and give thanks to the generous support by the Anglican Care Network, Anglican Social Service and Community Development Board, and the Catholic Diocese of Palmerston North, the continued support by members of the ACROSS Supporters Trust, Milverton Trust, J R McKenzie Trust, PN Anglican Trust for Children, Ministry of Social Development.

Thanks also go to Auditor Daryl Pinny, Grant O' Donnell, lawyer, Wayne Cameron, Accountant and Kevin Frost, employment consultant for their ongoing contribution of time and professional expertise.

I am privileged as part of a team of people together with the support and assistance of the Anglican and Catholic churches, in utilising their talents to assist people by providing professional social services to individuals and families in need.

**Roger Clark**  
**Board Chair**



## DIRECTORS REPORT

---

We have seen a significant change over the last year in the range of programmes and services we provide, which has seen us;

- expanding the base of our contract work with Ministry of Social Development
- extending our after school children's programme
- planning a postnatal depression support group
- starting a suicide bereavement support group in Levin
- providing a locum social worker in Pahiatua
- supporting training alongside other community organisations
- contracting to provide clinical services for people with mental health needs

Over the last year we have also seen an increase in the number of referrals to ACROSS overall for family support and counselling.

Mostly people seek help for a range of concerns; this may include respite care for children (although we have seen the number of children who for various reasons have a need to be out of the care of their family decreasing), family counselling, advice on parenting or information on accessing other services..

Much of our work over the last year has been spread over various funding contracts, including with MidCentral District Health Board who has continued to fund the suicide bereavement group and, more recently the start of a postnatal depression support group. We have also supported services in Pahiatua where we have in the last six months had a social worker working one day a week. We also have discussion underway with the Manawatu Primary Health organisation on providing clinical services under their mental health treatment initiative.

While overall the number of children in care has dropped we continue to provide carer relief for children with specific health needs through a contract with MidCentral Health District Health Board. Since 2006 the number of children moving into permanent care with foster parents or returning to the care of family members has risen over the last 18 months (see Figure 8). This has mostly resulted from a more deliberate attempt to find stable long term care for children. The need for foster parents able to provide, in particular, respite and short term care (usually anything up to six months) is however still there.

Over the last year we have been fortunate to see an increase in funding from other sources including donations, trusts, including a significant bequest. We have also increased funding from fees for service which is mainly from professionals services provided by ACROSS such as training and supervision to other individuals and organisations. Increases in this sort of funding has meant that we have been able to focus on the delivery of programmes and services and reduce our administration costs overall from previous years (see Figure 4). Administration costs include salaries and expenses associated with supporting staff in their professional development; we place an important priority on this, this year we also provided training places for two counselling and social work students from Bible College NZ and Massey University.

We are reminded then, of Matthew 25:14, that we get back what we put in (and more); next year we want to continue our investment in the delivery of social services across the whole community. This will mean working closer with other community organisations and working in collaboration with government funders. This is a policy borne out of Ministry of Social Development 'pathways to

partnership' model which has seen additional funding offered to community organisations providing what are regarded as essential social services.

We are indebted in many ways to our parent bodies, the Anglican and Catholic parishes of Palmerston North, who provide us with the fundamental mandate to continue our work which is expressed in our mission statement. In the last 18 months our staffing has remained unchanged although we farewelled Heather Mansell, our Administrator who retired in February after 18 years of very loyal service to ACROSS. ACROSS employs six social workers and two counsellors (part and full time), supported by our two office staff, as a team we have come together twice over the last year and taken two days out to plan our services and look at our priorities. Our strategic plan is due for review at the end of this year and it will be interesting to look ahead having looked back at our achievements in the last two to three years. We are also supported by part time volunteers and we acknowledge gratefully their ongoing contribution. This year we saw the resignation of Brenda Papesch from our finance committee after many years of involvement and we thank her for her commitment. This committee is chaired by Wayne Cameron who has put in many hours of work, we are extremely fortunate to have Wayne's expertise and advice. We have a robust set of policies in place which guide our work backed up by a committee who has the job of reviewing these, thanks must go to Kevin Frost in particular for his voluntary input,

We would also like to thank the Board for its support over the last year, especially to those on subcommittees; as a community organisation we have continued to benefit from the contribution our board members make to ACROSS.

This year as well is the 10 year anniversary of the Hikoi of Hope when we remember again the importance of re-examining the wider choices we are making as a nation. Then, as now, the "the big picture" is the same, jobs, the health system, benefit and wage levels, housing and education are still critical to all New Zealanders; we trust that the programmes and services we provide alongside other agencies in the community, both church and non church go a significant way towards meeting these needs.

### **Graeme Munford**



## OUR PROGRAMMES AND SERVICES

---

- **Family support** which includes home based support with parents (e.g. helping with parenting strategies), managing relationship problems in the home, behavioural issues with children/ young people, completing child safety/ risk assessments/ obtaining specialist reports (e.g. mental health/ drug/alcohol assessments), assisting with access to basic needs e.g. housing/ employment/ child care where needed.
- **Counselling**, for adults and children and young people.
- **Foster care** – including carer relief; respite care/ short and long term care for children and teenagers unable to live with their family.
- **Groups** – *bereavement by suicide support group* (fortnightly in Palmerston North and Levin) for people affected by the loss of someone through suicide

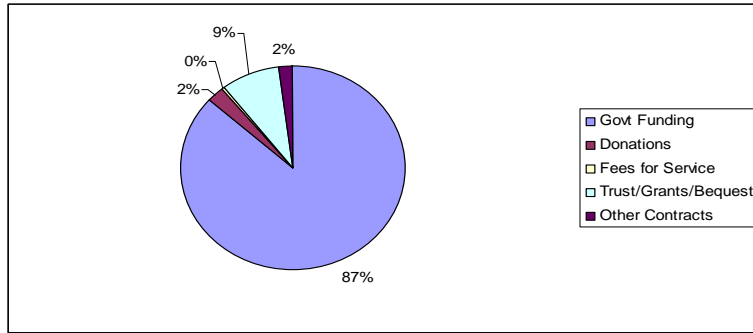
*Children's programme* - a 6 week programme held once a week after school during the school term for 8-10 and 10-12 year olds, currently offered to two local schools focusing on building self esteem and confidence.

*Postnatal depression therapy support group* beginning October.

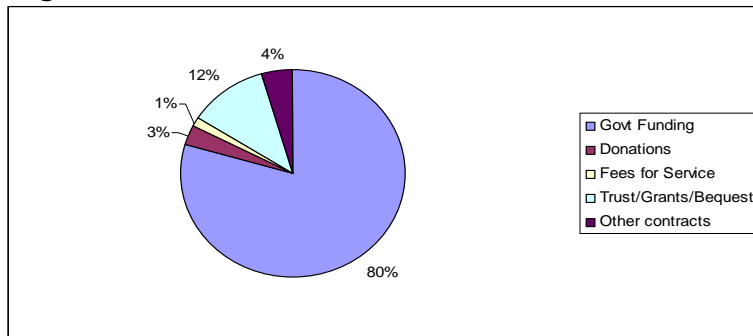
**Referrals** are received from people themselves wanting support and from a range of sources including primary health providers, schools and other professionals.

There is **no cost** for our services and programmes although some people choose to contribute towards the cost of counselling.

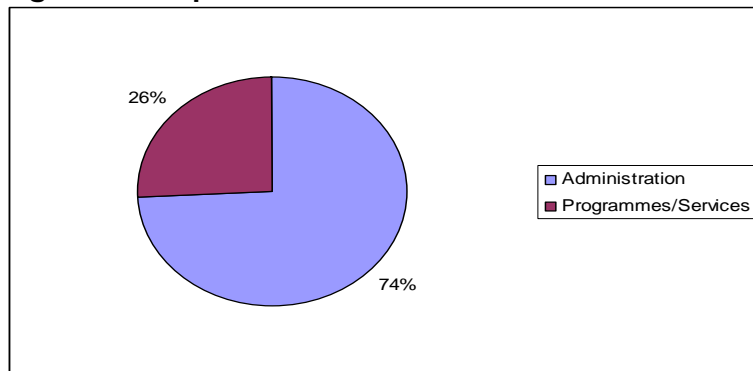
**Figure 1 - Income 2006-07**



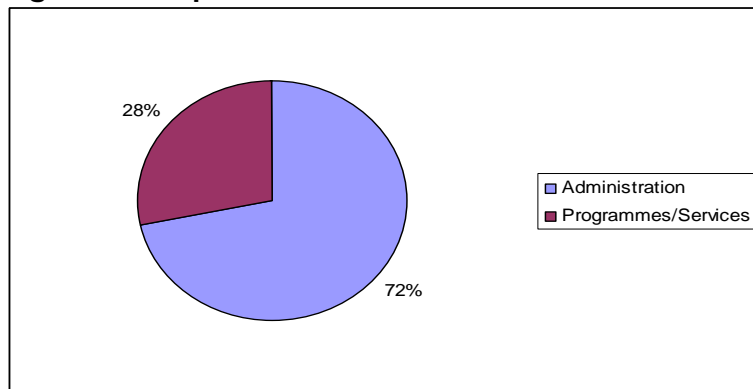
**Figure 2 - Income 2007-08**



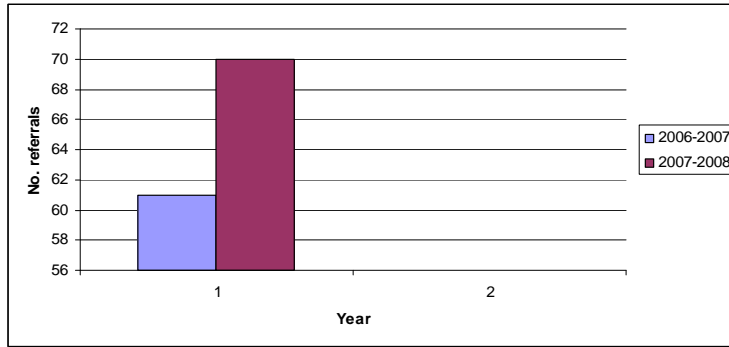
**Figure 3 - Expenditure 2006-07**



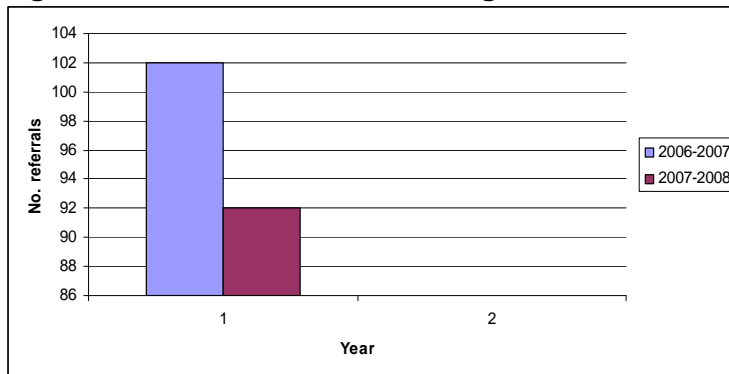
**Figure 4 - Expenditure 2007-08**



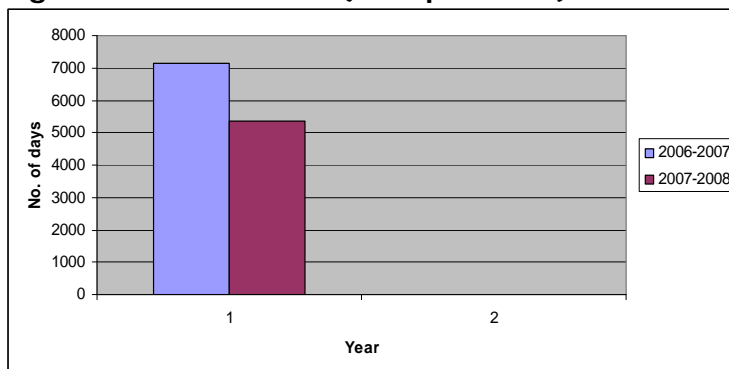
**Figure 5 - Referrals – Family Support**



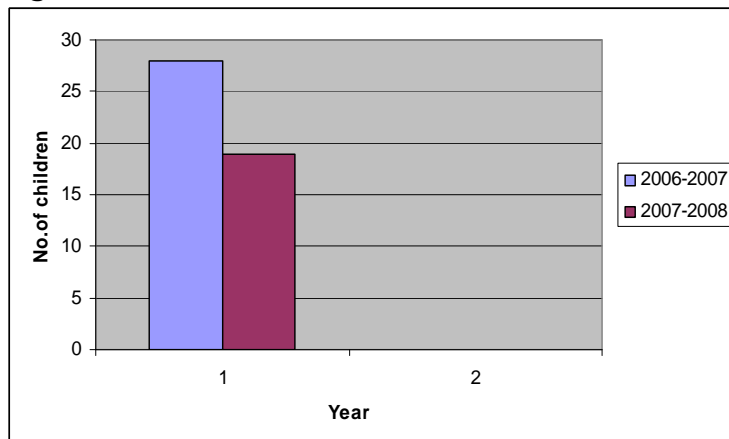
**Figure 6 - Referrals - Counselling**



**Figure 7 - Foster Care (care provided)**



**Figure 8 – Foster Care (children in care)**



## Financial Report

Summary of Financial position – year ended 30 June 2008  
(for a full statement of audited accounts contact ACROSS)

### INCOME

Across Holdings Dividend	26,500
Across Supporters Trust	19,151
Anglican Care Network (Tindall)	5,000
Counselling Contributions	5,161
CYF CONTRACTS	411,049
CYF Family & Crisis Counselling	18,961
CYF SW Support & Respite Care	121,008
Donation for Services	770
Estates Trusts & Grants	18,800
Interest	24,314
Invoiced Services	9,754
MCH BBS Support Group	17,442
MCH Carer Relief	12,300
MSDStrengthening Fam06-07	21,995
MSDStrengtheningFam07-08	6,700.00
NZ Lottery Grants Board	39,100
PN Anglican Trust for Children	12,000
PN Catholic Diocese	12,000
Sundry Income	1,330
<b>TOTAL INCOME</b>	<b>776,635</b>

### EXPENSES

ACC Levy	1,314
Advertising	2,560
After School Programme	6,951
Annual Report	314
Audit Fee	1,300
CDDF Loan - Interest	8,365
Computer Expenses	1329
Conference and Travel	2,610
CYF Board Payments	109,965
CYF Contract - Direct Expenses	78,714
CYF Legal Costs	1,336
CYF Respite Fostercare	4,432
Depreciation	6,003
Insurance	1,932
Interest & Bank Fees	956
Liability Ins. – Board and Staff	2,923
MCH Carer Relief Payments	6,225
MCH Support Group	9,862
Motor Vehicle	10,404
Newsletters	948
Office Equipment	280
Operating Costs incl R&M	8,496
Power	3,079
Printing Postage & Stationery	7,811
Professional Costs	1,440
Rates 294A Church Street	316
Rent 294AChurch St	26,500
Salaries	427,452
Staff Supervision	5,990
Staff Training	3,750
Strengthening Families Contract	6,499
Subscriptions	1,070
Sundry Expenses	6,510

Telephone, Tolls & Internet	8,033
<b>TOTAL EXPENSES</b>	<b>765,669</b>
<b>NET SURPLUS FOR THE YEAR</b>	<b>10,967</b>

## **Acknowledgments**

---

ACROSS Supporters Trust  
 Catholic Diocese of Palmerston North  
 Milverton Trust  
 J R McKenzie Trust  
 PN Anglican Trust for Children  
 Ministry of Social Development  
 Anglican Care Network  
 Anglican Social Service and Community Development Board  
 All Saints Church  
 Anglican Parish of Pohangina  
 Lotteries Grants Board

### **ACROSS Te Kotahitanga o Te Wairua Board members (2007-08)**

Roger Clark (St Patricks Parish)  
 Barry Stevenson (All Saints, PN)  
 Barry Allport (St Matthews, PN)  
 Mary Eastham (Community representative)  
 Rachel Lohrey (Community representative)  
 Max Tregonning (St Peters, PN)  
 Marjorie Dawson (St Marys Parish)  
 Eileen O'Connor (Our Lady of Lourdes Parish)  
 Lesley Read (Community representative)



**ACROSS Te Kotahitanga o Te Wairua**

**294A Church St  
Palmerston North**

**PO Box 1140  
Palmerston North**

**Email: [across@inspire.org.nz](mailto:across@inspire.org.nz)**

**Website: [www.across.org.nz](http://www.across.org.nz)**

**Open Monday-Friday 8.30am-5pm**